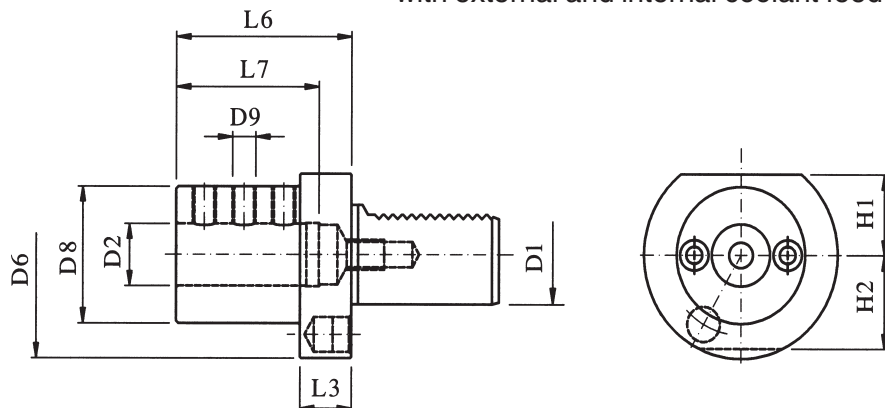


BORING BAR HOLDER, FORM E2 with external and internal coolant feed



EA PART NUMBER	D1	D2 H6	DIN- DESIGNATION	D6	D8	H1	H2	L3	L6	L7
E200.015.239	16	1/4	E2-16	40	32	18	18	13	44	34
E200.015.240	16	5/16	E2-16	40	32	18	18	13	44	34
E200.015.241	16	3/8	E2-16	40	32	18	18	13	44	34
E200.015.242	16	1/2	E2-16	40	40	18	18	13	44	34
E200.015.243	16	5/8	E2-16	40	40	18	18	13	44	34
E201.010.240	20	5/16	E2-20	50	40	23	23	18	50	41
E201.010.241	20	3/8	E2-20	50	40	23	23	18	50	41
E201.010.242	20	1/2	E2-20	50	40	23	23	18	50	41
E201.010.243	20	5/8	E2-20	50	40	23	23	18	50	41
E201.010.244	20	3/4	E2-20	50	50	23	23	18	50	41
E201.010.245	20	1	E2-20	50	50	23	23	18	60	51
*E231.010.163	20	5/8	E2-20	50	----	----	----	----	40	27
E217.015.240	25	5/16	E2-25	58	40	25	25	18	50	41
E217.015.241	25	3/8	E2-25	58	40	25	25	18	50	41
E217.015.242	25	1/2	E2-25	58	40	25	25	18	50	41
E217.015.243	25	5/8	E2-25	58	40	25	25	18	50	41
E217.015.244	25	3/4	E2-25	58	58	25	25	18	50	41
E217.015.245	25	1	E2-25	58	58	25	25	18	60	51
**E212.015.240	30	5/16	E2-30	68	55	28	30	22	60	51
**E212.015.241	30	3/8	E2-30	68	55	28	30	22	60	51
**E212.015.242	30	1/2	E2-30	68	55	28	30	22	60	51
**E212.015.243	30	5/8	E2-30	68	55	28	30	22	60	51
**E212.015.244	30	3/4	E2-30	68	55	28	30	22	60	51
**E212.015.245	30	1	E2-30	68	55	28	30	22	60	51
**E212.015.246	30	1-1/4	E2-30	68	68	28	30	22	75	61
**E212.015.247	30	1-1/2	E2-30	68	68	28	30	22	75	61

* Height and side adjustable.

** Coolant supply internal/external by set screw adjustment.

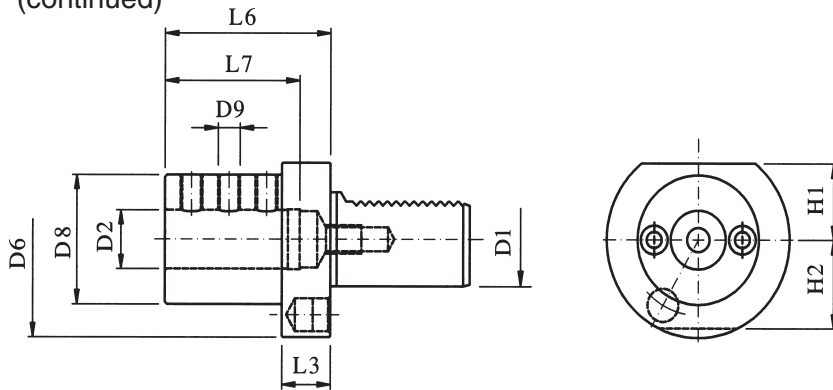


VDI

BORING BAR HOLDER, FORM E2

with external and internal coolant feed

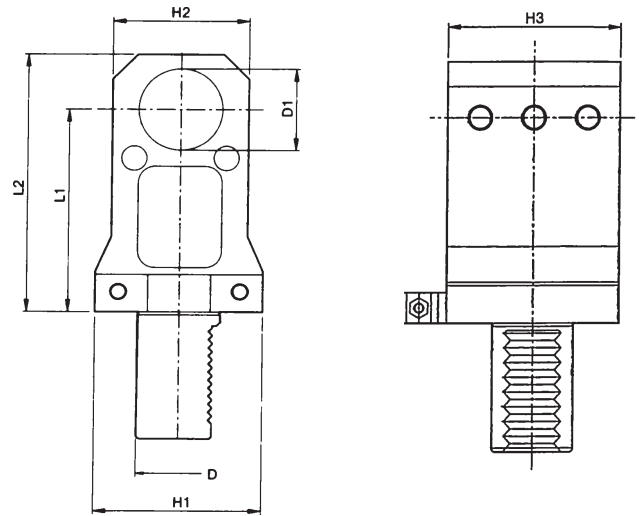
(continued)



EA PART NUMBER	D1	D2 H6	DIN-DESIGNATION	D6	D8	H1	H2	L3	L6	L7
E213.015.240	40	5/16	E2-40	83	55	32.5	----	22	75	61
E213.015.241	40	3/8	E2-40	83	55	32.5	----	22	75	61
E213.015.242	40	1/2	E2-40	83	55	32.5	----	22	75	61
E213.015.243	40	5/8	E2-40	83	55	32.5	----	22	75	61
E213.015.244	40	3/4	E2-40	83	55	32.5	----	22	75	61
E213.015.245	40	1	E2-40	83	55	32.5	----	22	75	61
E213.015.246	40	1-1/4	E2-40	83	83	32.5	----	22	75	61
E213.015.247	40	1-1/2	E2-40	83	83	32.5	----	22	75	61
E213.015.248	40	1-5/8	E2-40	83	83	32.5	----	20	90	76
E214.015.242	50	1/2	E2-50	98	68	35	----	30	90	76
E214.015.243	50	5/8	E2-50	98	68	35	----	30	90	76
E214.015.244	50	3/4	E2-50	98	68	35	----	30	90	76
E214.015.245	50	1	E2-50	98	68	35	----	30	90	76
E214.015.246	50	1-1/4	E2-50	98	68	35	----	30	90	76
E214.015.247	50	1-1/2	E2-50	98	98	35	----	30	90	76
E214.015.248	50	1-5/8	E2-50	98	98	35	----	30	90	76
E214.015.249	50	1-3/4	E2-50	98	98	35	----	30	100	86
E214.015.250	50	2	E2-50	98	98	35	----	30	100	86
E215.015.243	60	5/8	E2-60	123	68	42.5	----	30	90	76
E215.015.244	60	3/4	E2-60	123	68	42.5	----	30	90	76
E215.015.245	60	1	E2-60	123	68	42.5	----	30	90	76
E215.015.246	60	1-1/4	E2-60	123	68	42.5	----	30	90	76
E215.015.247	60	1-1/2	E2-60	123	98	42.5	----	30	90	76
E215.015.248	60	1-5/8	E2-60	123	98	42.5	----	30	90	76
E215.015.249	60	1-3/4	E2-60	123	98	42.5	----	30	100	86
E215.015.250	60	2	E2-60	123	98	42.5	----	30	100	86

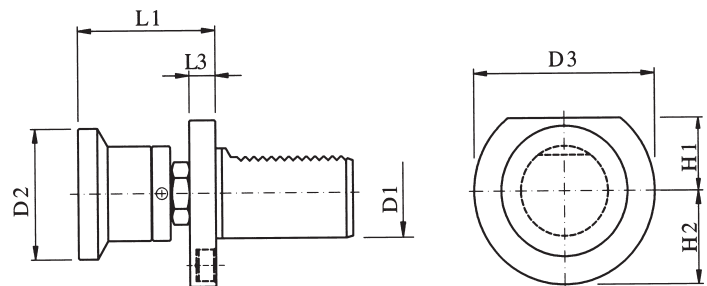
NOTE: COOLANT SUPPLY INTERNAL / EXTERNAL BY SET SCREW ADJUSTMENT.

BORING BAR HOLDER, TYPE T1 EXTERNAL, INTERNAL COOLANT SUPPLY



EA PART NUMBER	D	D1	H1	H2	H3	L1	L2
VDI T1-30-1.25"-65	30	1.25"	65	52	62	65	90
VDI T1-30-1.25"-85	30	1.25"	65	52	62	85	108
VDI T1-30-1.25"-100	30	1.25"	65	52	62	100	123
VDI T1-30-1.25"-120	30	1.25"	65	52	62	120	143
VDI T1-40-1.5"-85	40	1.5"	80	65	85	85	112
VDI T1-40-1.5"-100	40	1.5"	80	65	85	100	127

REVOLVING STOCK STOP



EA PART NUMBER	D1	D2	D3	H1	H2	L1	L3
E201.040.160	20	45	50	23	23	40 - 70	9
E217.045.220	25	45	50	23	23	40 - 70	9
E202.040.090	30	58	68	28	30	61 - 97	11
E202.045.100	30	26	68	28	30	62 - 95	20
E203.040.220	40	58	83	32.5	---	62 - 95	12