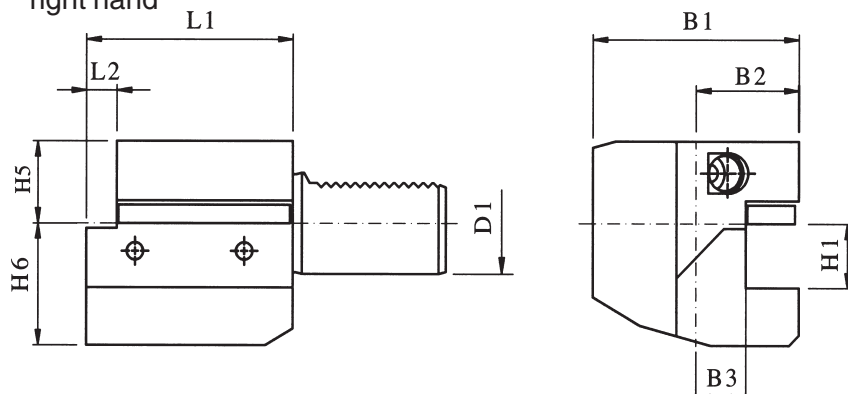


RECTANGULAR LENGTHWISE TOOL HOLDER, FORM C1

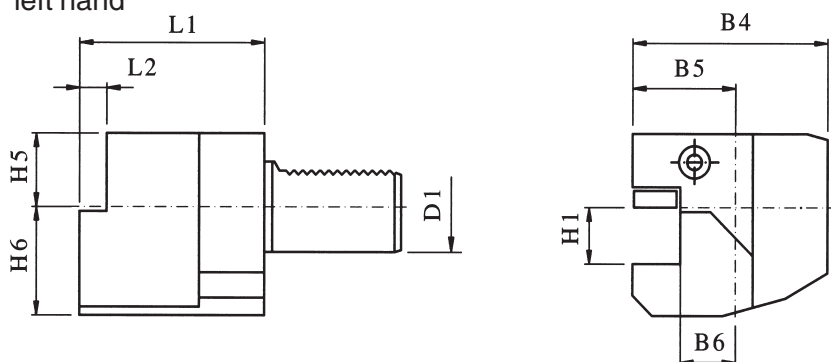
right hand



EA PART NUMBER	D1	H1 -0.1MM	DIN DESIGNATION	B1	B2	B3 +0.5	H5	H6	L1	L2
E210.120.250	16	1/2	C1-16	43	24	13	20	22	44	5
E211.122.250	20	5/8	C1-20	52	27	13	25	30	55	7
E211.120.250	20	5/8	C1-20	65	40	26	25	30	50	---
E217.120.250	25	5/8	C1-25	58	33	19	25	30	55	7
E212.120.250	30	3/4	C1-30	70	35	17	28	38	70	10
E213.120.250	40	1	C1-40	85	42.5	20.5	32.5	48	85	12.5
E214.120.250	50	1-1/4	C1-50	100	50	25.5	35	60	100	16
E215.120.250	60	1-1/4	C1-60	125	62.5	32.5	42.5	62.5	125	16

RECTANGULAR LENGTHWISE TOOL HOLDER, FORM C2

left hand



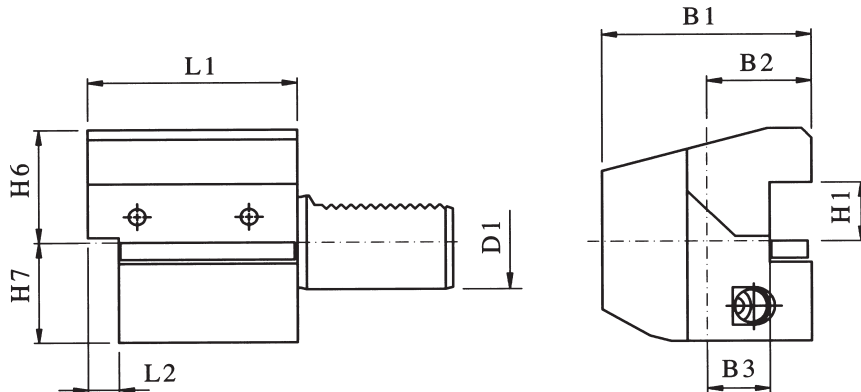
EA PART NUMBER	D1	DIN DESIGNATION	H1 -0.1MM	B4	B5	B6 +0.5	H5	H6	L1	L2
E221.125.250	20	C2-20	5/8	65	40	26	25	30	50	---
E227.125.250	25	C2-25	5/8	58	33	19	25	30	55	7
E222.125.250	30	C2-30	3/4	76	41	23	28	38	70	10
E223.125.250	40	C2-40	1	90	47.5	25.5	32.5	48	85	12.5
E224.125.250	50	C2-50	1-1/4	105	55	30.5	35	60	100	16
E225.125.250	60	C2-60	1-1/4	125	62.5	32.5	42.5	62.5	125	16



VDI

RECTANGULAR LENGTHWISE TOOL HOLDER, FORM C3

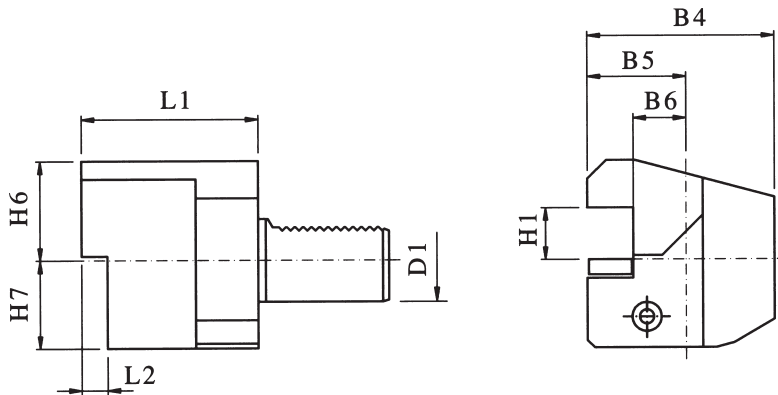
overhead right hand



EA PART NUMBER	D1	H1 -0.1MM	DIN DESIGNATION	B1	B2	B3 +0.5	H6	H7	L1	L2
E210.125.250	16	1/2	C3-16	43	24	13	22	20	44	5
E211.127.250	20	5/8	C3-20	52	27	13	30	25	55	7
E211.125.250	20	5/8	C3-20	65	40	26	30	25	50	----
E217.125.250	25	5/8	C3-25	58	33	19	30	25	55	7
E212.125.250	30	3/4	C3-30	70	35	17	38	35	70	10
E213.125.250	40	1	C3-40	85	42.5	20.5	48	42.5	85	12.5
E214.125.250	50	1-1/4	C3-50	100	50	25.5	60	50	100	16
E215.125.250	60	1-1/4	C3-60	125	62.5	32.5	62.5	62.5	125	16

RECTANGULAR LENGTHWISE TOOL HOLDER, FORM C4

overhead left hand



EA PART NUMBER	D1	H1 -0.1MM	DIN DESIGNATION	B4	B5	B6 +0.5	H6	H7	L1	L2
E221.120.250	20	5/8	C4-20	65	40	26	30	25	50	----
E227.120.250	25	5/8	C4-25	58	33	19	30	25	55	7
E222.120.250	30	3/4	C4-30	76	41	23	38	35	70	10
E223.120.250	40	1	C4-40	90	47.5	25.5	48	42.5	85	12.5
E224.120.250	50	1-1/4	C4-50	105	55	30.5	60	50	100	16
E225.120.250	60	1-1/4	C4-60	125	62.5	32.5	62.5	62.5	125	16