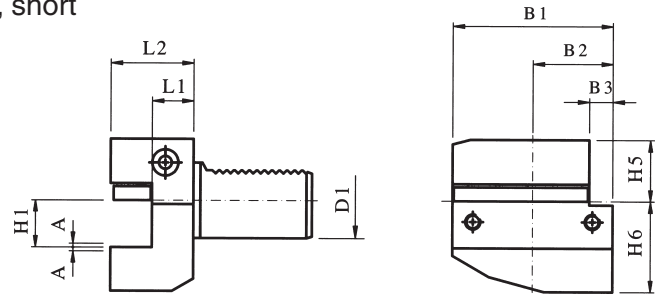


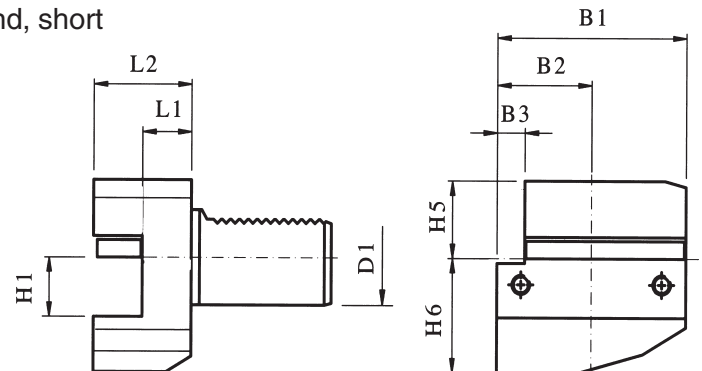
**RECTANGULAR TRANSVERSE TOOL HOLDER, FORM B1**  
 right hand, short



EA PART NUMBER	D1	H1 -0.1MM	DIN DESIGNATION	B1	B2	B3	H5	H6	L1 +0.5	L2
E210.100.250	16	1/2	B1-16	42	23	5	20	22	13	24
E211.102.250	20	5/8	B1-20	55	30	7	25	30	16	30
E211.100.250	20	5/8	B1-20	55	30	7	25	30	26	40
*E231.100.250	20	5/8	B1-20	55	30	7	25	30	26	40
E217.100.250	25	5/8	B1-25	55	30	7	25	30	16	30
E212.100.250	30	3/4	B1-30	70	35	10	28	38	22	40
E212.102.250	30	3/4	B1-30	70	35	10	28	38	42	60
*E232.200.250	30	3/4	B1-30	70	35	10	28	35	32	50
E213.100.250	40	1	B1-40	85	42.5	12.5	32.5	48	22	44
E214.100.250	50	1-1/4	B1-50	100	50	16	35	60	30	55
E215.100.250	60	1-1/4	B1-60	125	62.5	16	42.5	62.5	30	60

\*A = 1mm +/- height adjustment

**RECTANGULAR TRANSVERSE TOOL HOLDER, FORM B2**  
 left hand, short

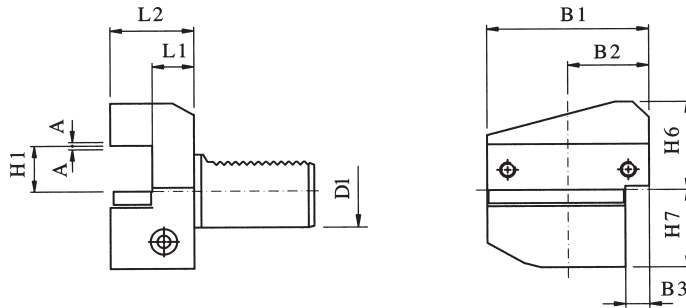


EA PART NUMBER	D1	DIN DESIGNATION	H1 -0.1MM	B1	B2	B3	H5	H6	L1 +0.5	L2
E211.117.250	20	B2-20	5/8	55	30	7	25	30	16	30
E211.115.250	20	B2-20	5/8	55	30	7	25	30	26	40
E217.115.250	25	B2-25	5/8	55	30	7	25	30	16	30
E212.115.250	30	B2-30	3/4	70	35	10	28	38	22	40
E212.117.250	30	B2-30	3/4	70	35	10	28	38	42	60
E213.115.250	40	B2-40	1	85	42.5	12.5	32.5	48	22	44
E214.115.250	50	B2-50	1-1/4	100	50	16	35	60	30	55
E215.115.250	60	B2-60	1-1/4	125	62.5	16	42.5	62.5	30	60



VDI

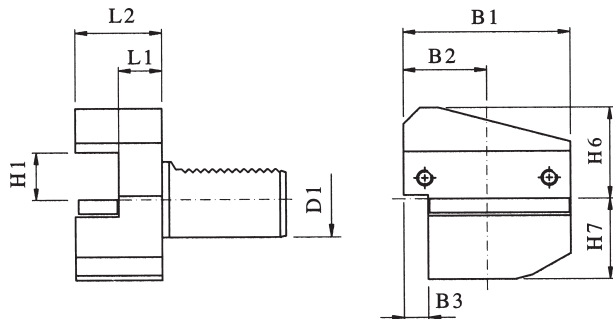
## RECTANGULAR TRANSVERSE TOOL HOLDER overhead right hand, short, Form B3



EA PART NUMBER	D1	H1 -0.1MM	DIN DESIGNATION	B1	B2	B3	H6	H5	L1 +0.5	L2
E210.105.250	16	1/2	B3-16	42	23	5	22	20	13	24
E211.107.250	20	5/8	B3-20	55	30	7	30	25	16	30
E211.105.250	20	5/8	B3-20	55	30	7	30	25	26	40
*E231.107.250	20	5/8	B3-20	55	30	7	30	25	18	30
*E231.105.250	20	5/8	B3-20	55	30	7	30	25	26	40
E217.105.250	25	5/8	B3-25	55	30	7	30	25	16	30
E212.105.250	30	3/4	B3-30	70	35	10	38	35	22	40
E212.107.250	30	3/4	B3-30	70	35	10	38	35	42	60
E213.105.250	40	1	B3-40	85	42.5	12.5	48	42.5	22	44
E214.105.250	50	1-1/4	B3-50	100	50	16	60	50	30	55
E215.105.250	60	1-1/4	B3-60	125	62.5	16	62.5	62.5	30	60

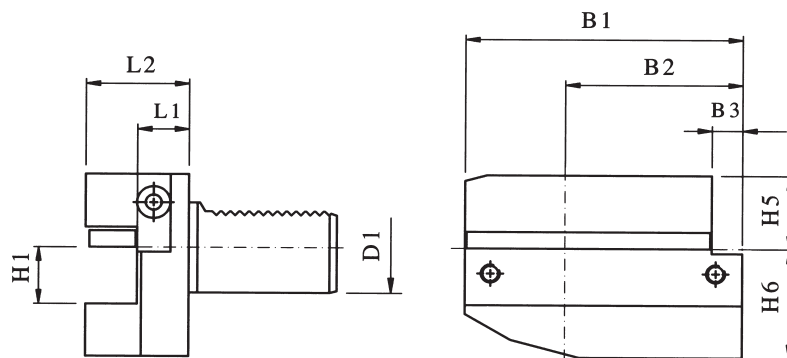
\* A = 1MM± HEIGHT ADJUSTABLE

## RECTANGULAR TRANSVERSE TOOL HOLDER overhead left hand, short, Form B4



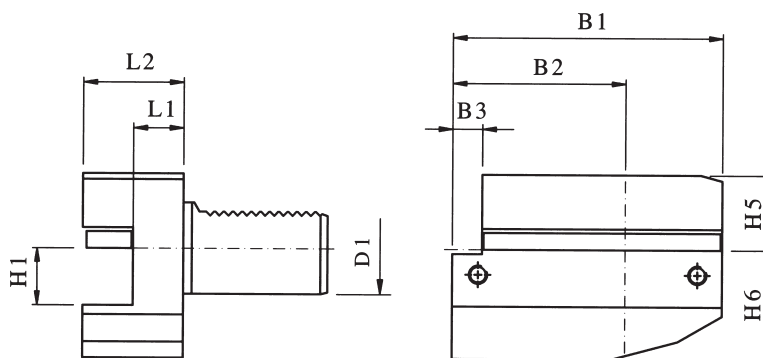
EA PART NUMBER	D1	DIN DESIGNATION	H1 -0.1MM	B1	B2	B3	H6	H7	L1 +0.5	L2
E211.112.250	20	B4-20	5/8	55	30	7	30	25	16	30
E211.110.250	20	B4-20	5/8	55	30	7	30	25	26	40
E217.110.250	25	B4-25	5/8	55	30	7	30	25	16	30
E212.110.250	30	B4-30	3/4	70	35	10	38	35	22	40
E212.112.250	30	B4-30	3/4	70	35	10	38	35	42	60
E213.110.250	40	B4-40	1	85	42.5	12.5	48	42.5	22	44
E214.110.250	50	B4-50	1-1/4	100	50	16	60	50	30	55
E215.110.250	60	B4-60	1-1/4	125	62.5	16	62.5	62.5	30	60

## RECTANGULAR TRANSVERSE TOOL HOLDER, FORM B5 right hand, long



EA PART NUMBER	D1	DIN DESIGNATION	H1 -0.1MM	B1	B2	B3	H5	H6	L1 +0.5	L2
E221.102.250	20	B5-20	5/8	75	50	7	25	30	16	30
E221.100.250	20	B5-20	5/8	75	50	7	25	30	26	40
E222.100.250	30	B5-30	3/4	100	65	10	28	38	22	40
E222.102.250	30	B5-30	3/4	100	65	10	28	38	42	60
E223.100.250	40	B5-40	1	118	75.5	12.5	32.5	48	22	44
E224.100.250	50	B5-50	1-1/4	130	80	16	35	60	30	55
E225.100.250	60	B5-60	1-1/4	145	82.5	16	42.5	62.5	30	60

## RECTANGULAR TRANSVERSE TOOL HOLDER, FORM B6 left hand, long



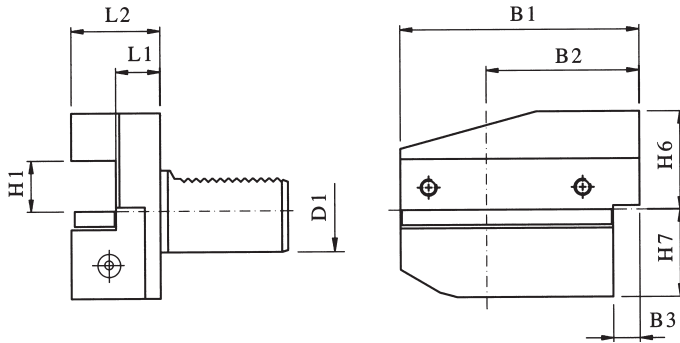
EA PART NUMBER	D1	DIN DESIGNATION	H1 -0.1MM	B1	B2	B3	H5	H6	L1 +0.5	L2
E221.117.250	20	B6-20	5/8	75	50	7	25	30	16	30
E221.115.250	20	B6-20	5/8	75	50	7	25	30	26	40
E222.115.250	30	B6-30	3/4	100	65	10	28	38	22	40
E222.117.250	30	B6-30	3/4	100	65	10	28	38	42	60
E223.115.250	40	B6-40	1	118	75.5	12.5	32.5	48	22	44
E224.115.250	50	B6-50	1-1/4	130	80	16	35	60	30	55
E225.115.250	60	B6-60	1-1/4	145	82.5	16	42.5	62.5	30	60



VDI

## RECTANGULAR TRANSVERSE TOOL HOLDER, FORM B7

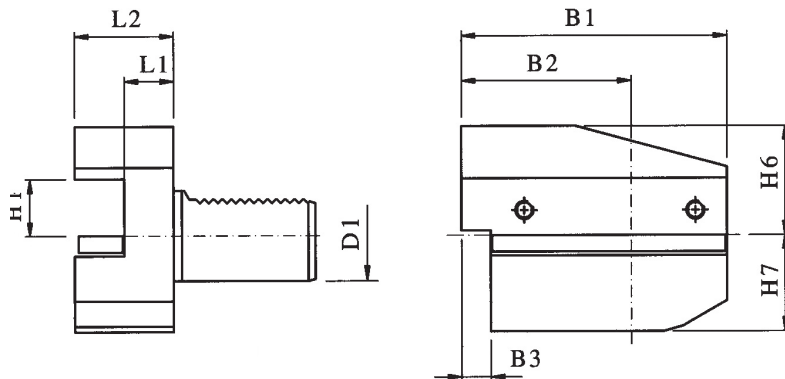
overhead right hand, long



EA PART NUMBER	D1	H1 -0.1MM	DIN DESIGNATION	B1	B2	B3	H6	H7	L1 +0.5	L2
E221.107.250	20	5/8	B7-20	75	50	7	30	25	16	30
E221.105.250	20	5/8	B7-20	75	50	7	30	25	26	40
E222.105.250	30	3/4	B7-30	100	65	10	38	35	22	40
E222.107.250	30	3/4	B7-30	100	65	10	38	35	42	60
E223.105.250	40	1	B7-40	118	75.5	12.5	48	42.5	22	44
E224.105.250	50	1-1/4	B7-50	130	80	16	60	50	30	55
E225.105.250	60	1-1/4	B7-60	145	82.5	16	62.5	62.5	30	60

## RECTANGULAR TRANSVERSE TOOL HOLDER, FORM B8

overhead left hand, long



EA PART NUMBER	D1	H1 -0.1MM	DIN DESIGNATION	B1	B2	B3	H6	H7	L1 +0.5	L2
E221.112.250	20	5/8	B8-20	75	50	7	30	25	16	30
E221.110.250	20	5/8	B8-20	75	50	7	30	25	26	40
E222.110.250	30	3/4	B8-30	100	65	10	38	35	22	40
E222.112.250	30	3/4	B8-30	100	65	10	38	35	42	60
E223.110.250	40	1	B8-40	118	75.5	12.5	48	42.5	22	44
E224.110.250	50	1-1/4	B8-50	130	80	16	60	50	30	55
E225.110.250	60	1-1/4	B8-60	145	82.5	16	62.5	62.5	30	60