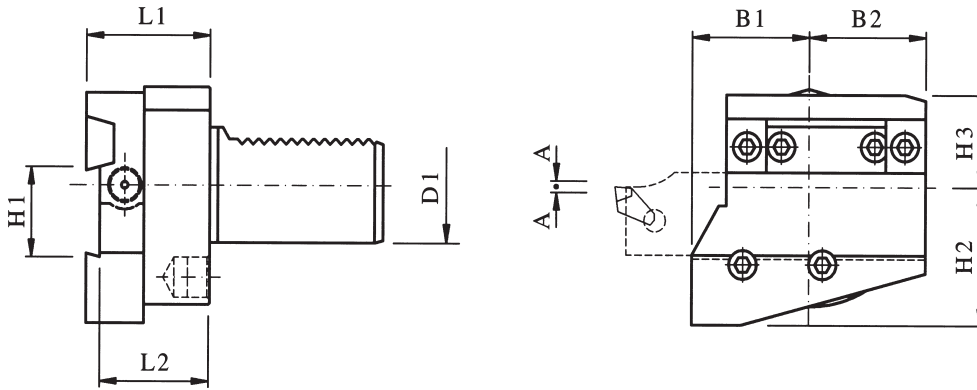




VDI

CUT-OFF TOOL HOLDER

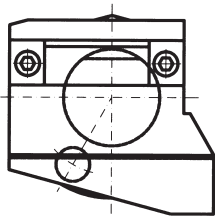


EA PART NUMBER	D1	EXECUTION	B1	B2	H1	H2	H3	L1	L2	A
E211.650.160	20	A	30	25	26	27.5	27.5	40	35	1.5
E211.655.220	20	C	30	25	26	27.5	27.5	40	35	1.5
*E217.680.220	25	A	35	35	26	38	28	44	39	2
*E217.665.220	25	C	35	35	26	38	28	44	39	2
*E212.680.220	30	A	35	35	26	38	28	44	39	2
*E212.675.220	30	B	35	35	26	38	28	44	39	2
*E212.665.220	30	C	35	35	26	38	34	44	39	2
*E212.670.220	30	D	35	35	26	38	34	44	39	2
*E213.630.220	40	A	42.5	42.5	32	48	32	44	39	2
*E213.635.220	40	B	42.5	42.5	32	48	32	44	39	2
*E213.640.220	40	C	42.5	42.5	32	48	32	44	39	2
*E213.645.220	40	D	42.5	42.5	32	48	32	44	39	2

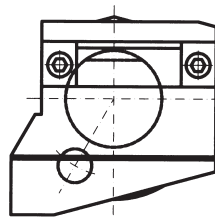
For Iscar and Coromant cutting-off tool.

* For coolant supply through the cutting-off tool.

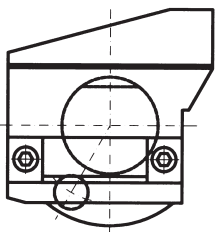
Form A



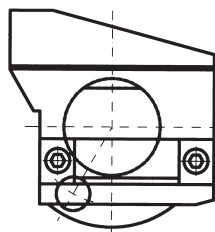
Form B

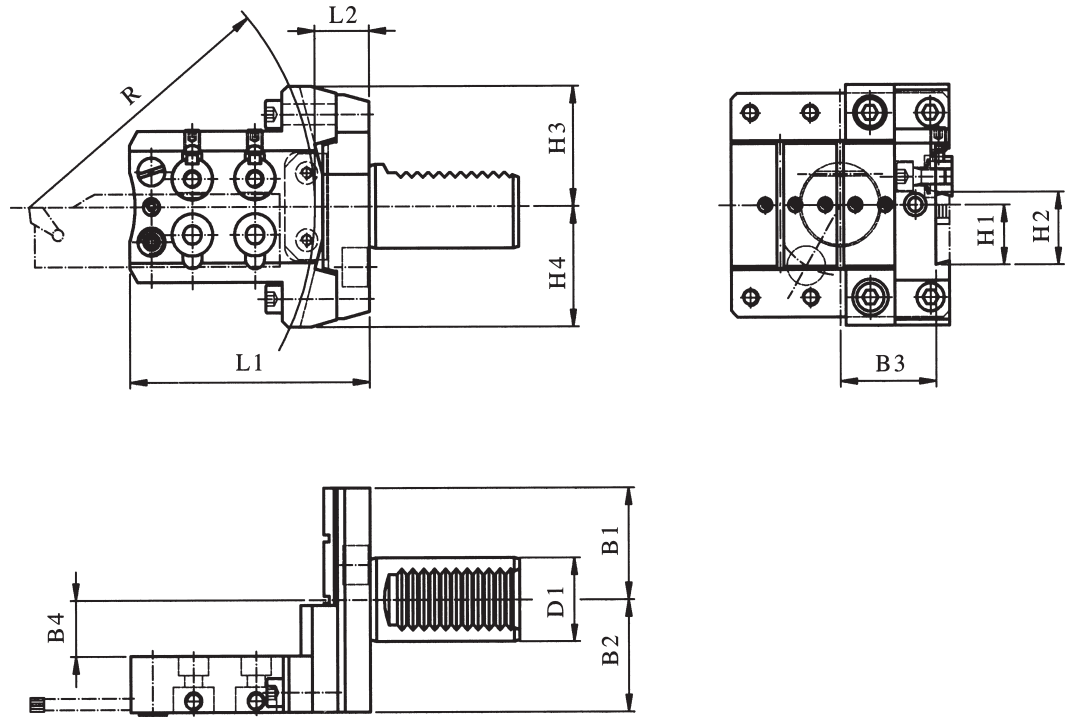


Form C



Form D





EA PART NUMBER	D1	H1	H2	H3	H4	B1	B2	B3	B4	L1	L2	R
E7.025.037	25	21.4	26	43	43	40	40	35	20	88	20	105
E7.030.225	30	21.4	26	43	43	40	40	35	20	88	20	105
E7.030.284	30	21.4	26	43	43	40	40	35	20	110	20	127
E7.030.332	30	21.4	26	43	43	40	80	35	20	102	20	118

Subject to modification.