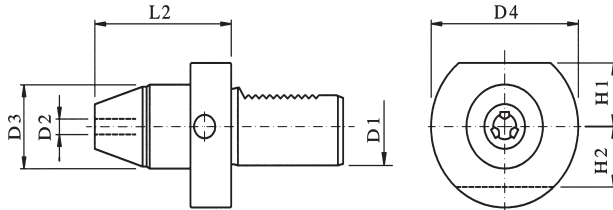




VDI

## SHORT DRILLING CHUCK

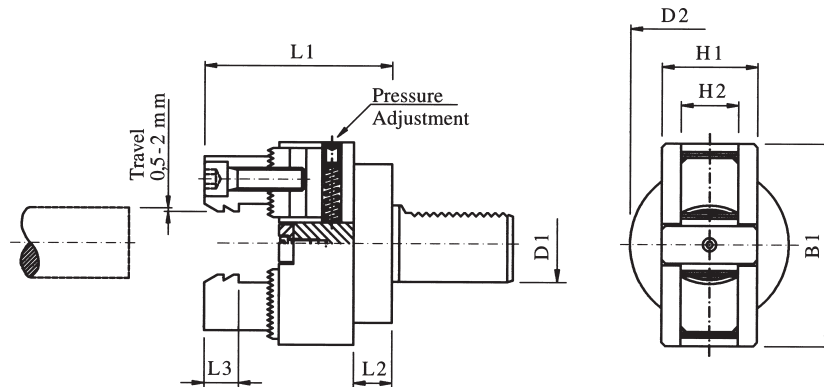
for reversible operation



EA PART NUMBER	D1	D2	D3	D4	H1	H2
E241.020.220	20	0 - 10	50	50	----	38
E247.020.220	25	0.5 - 8	36	58	----	68
E242.022.220	30	1 - 13	43	68	28	89
E243.022.220	40	1 - 13	43	83	32.5	85
E243.027.220	40	2.5 - 16	56	83	32.5	100
E244.025.220	50	2.5 - 16	57	98	35	105
E245.020.220	60	2.5 - 16	57	123	42.5	105

Central Coolant Supply.

## BAR PULLER



EA PART NUMBER	D1	RANGE DIA.	CLAMPING PRESSURE	L1	L2	L3	B1	D2	H1	H2
E241.200.220	20	* 4 - 68	20 - 120	89.5	16	18	106	50	50	30
E242.200.220	30	* 4 - 68	20 - 120	90	16.5	18	106	68	50	30
E243.200.220	40	* 4 - 68	20 - 120	90	16.5	18	106	83	50	30
E244.200.220	50	* 4 - 68	20-120	116	42.5	18	106	98	50	30

\* Tool includes 1 set of jaws for range 15-68mm.

## JAWS

for bar puller

