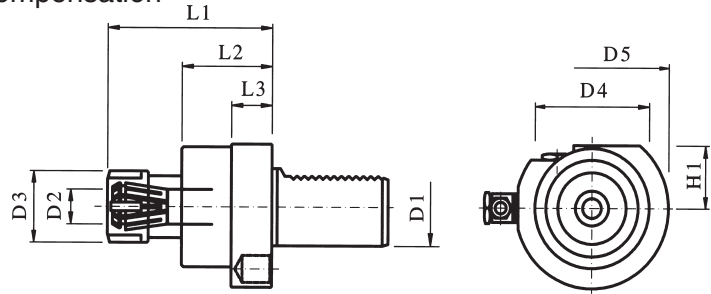


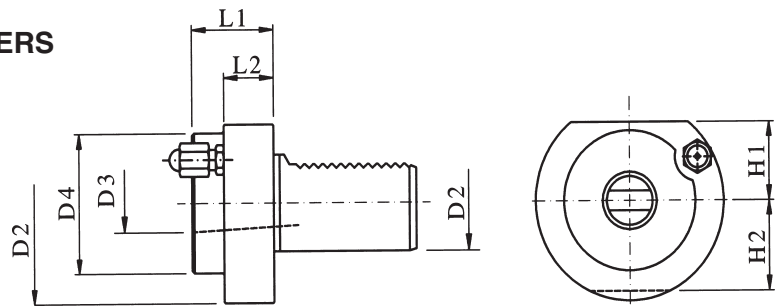
**COLLET CHUCK**

with tension and traction compensation



EA PART NUMBER	D1	D2	D3	D4	D5	H1	L1	L2	L3	COLLETS	TENSION / TRACTION COMP.
E221.390.220	20	0.5-10	28	45	50	23	65	40	18	ER16	6 / 1.5
E227.390.220	25	0.5-10	28	45	50	23	65	40	18	ER16	6 / 1.5
E222.390.220	30	1-16	42	62	68	28	90	54	22	ER25	8 / 2
E223.390.220	40	1-16	42	62	83	32.5	85	49	22	ER25	8 / 2
E224.390.220	50	1-16	42	62	98	35	85	49	22	ER25	8 / 2

**MORSE TAPER HOLDERS**



EA PART NUMBER	D1	(D3) MT	DIN DESIGNATION	D2	D4	H1	H2	L1	L2
E201.125.150	20	1	F20-MK-DK1	50	----	23	23	23	----
E201.130.220	20	2	F20-MK-DK2	50	----	23	23	87	----
E207.125.220	25	1	F25-MK-DK1	58	----	25	25	23	----
E207.130.150	25	2	F25-MK-DK2	58	----	25	25	27	----
E202.125.150	30	1	F30-MK-DK1	68	----	28	30	27	----
E202.130.150	30	2	F30-MK-DK2	68	----	28	30	27	----
E202.135.220	30	3	F30-MK-DK3	68	58	28	30	55	40
E203.130.150	40	2	F40-MK-DK2	83	55	32.5	----	36	22
E203.135.150	40	3	F40-MK-DK3	83	58	32.5	----	36	22
E203.140.150	40	4	F40-MK-DK4	83	68	32.5	----	80	22
E204.130.150	50	2	F50-MK-DK2	98	55	35	----	36	30
E204.135.150	50	3	F50-MK-DK3	98	58	35	----	36	30
E204.140.150	50	4	F50-MK-DK4	98	68	35	----	50	30
E205.130.220	60	2	F60-MK-DK2	123	55	42.5	----	36	30
E205.135.150	60	3	F60-MK-DK3	123	58	42.5	----	36	30
E205.140.150	60	4	F60-MK-DK4	123	68	42.5	----	50	30
E205.145.150	60	5	F60-MK-DK5	123	98	42.5	----	63	30