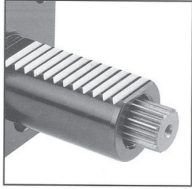


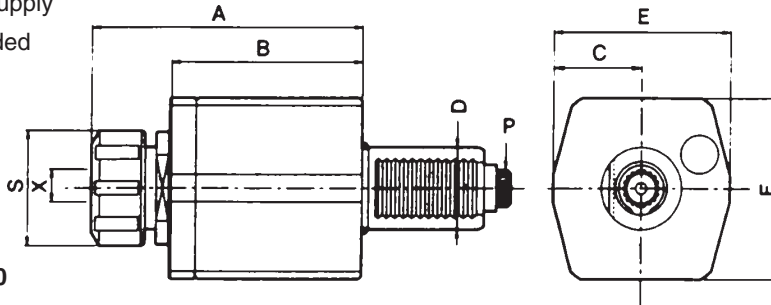


AXIAL DRILLING AND MILLING HEAD WITH DIN 5480 DRIVE COUPLING

- Uses ER collets
- External coolant supply
- Collet is not included



Coupling to DIN 5480

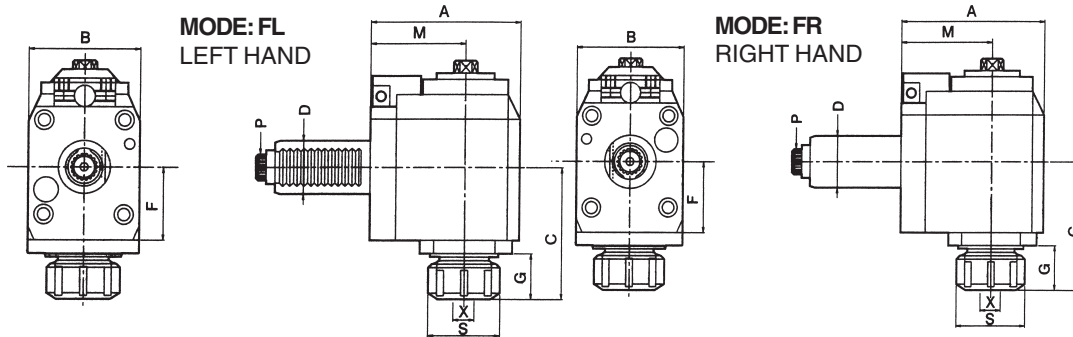


EA PART NUMBER	D DIN 69880	X CAPACITY	S	MAX RPM	i	A	B	C	E	F	P DIN 5480	
VDI DA30-5480-ER25	30	1-16	ER25	42	6000	1:1	101	70	33	66	66	W16X0.8
VDI DA40-5480-ER32	40	2-20	ER32	50	6000	1:1	89	55	39	79	78	W20X0.8

AXIAL TENSION COMPRESSION TAPPING HEADS ALSO AVAILABLE.

RADIAL DRILLING AND MILLING HEAD WITH DIN 5480 DRIVE COUPLING

- Uses ER collets
- External coolant supply
- Collet is not included

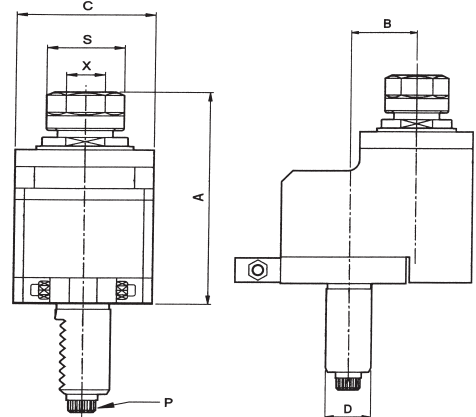


EA PART NUMBER	D DIN 69880	X CAPACITY	S	MAX RPM	i	A	B	C	F	G	M	P DIN 5480	
VDI FR30-5480-2565	30	1-16	ER25	42	5000	1:1	97	64	74.5	41	26	65	W16X0.8
VDI FL30-5480-2565													W16X0.8
VDI FR30-5480-2585	30	1-16	ER25	42	5000	1:1	117	64	74.5	41	26	85	W16X0.8
VDI FL30-5480-2585													W16X0.8
VDI FR40-5480-3265	40	2-20	ER32	50	5000	1:1	99	80	71	40	23	65	W20X0.8
VDI FL40-5480-3265													W20X0.8
VDI FR40-5480-3285	40	2-20	ER32	50	5000	1:1	119	80	71	40	23	85	W20X0.8
VDI FL40-5480-3285													W20X0.8
VDI FR40-5480-32100	40	2-20	ER32	50	5000	1:1	134	80	71	40	23	100	W20X0.8
VDI FL40-5480-32100													W20X0.8

NOTE: OUTPUT ROTATION IS OPPOSITE INPUT ROTATION.
RADIAL TENSION COMPRESSION TAPPING HEADS ALSO AVAILABLE.

OFFSET AXIAL DRILLING AND MILLING HEAD WITH DIN 5480 DRIVE COUPLING

- Uses ER collets
- External coolant supply
- Collet is not included



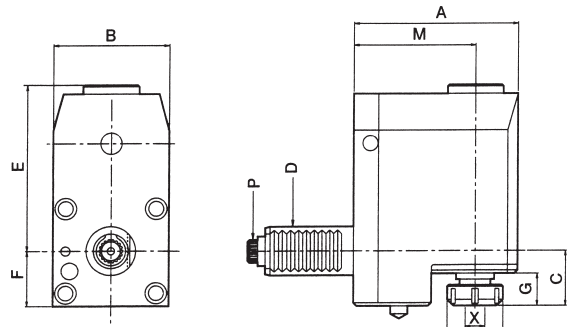
EA PART NUMBER	D DIN 69880	X CAPACITY		S	MAX RPM	i	A	B	C	P DIN 5480
VDI DA30-5480-2529	30	1-16	ER25	42	4000	1:1	100	29	60	W16X0.8
VDI DA30-5480-2529/1	30	1-16	ER25	42	8000	1:2	100	29	60	W16X0.8
VDI DA40-5480-3250	40	2-20	ER32	50	4000	1:1	113	50	80	W20X0.8

NOTE: OUTPUT ROTATION IS OPPOSITE INPUT ROTATION.

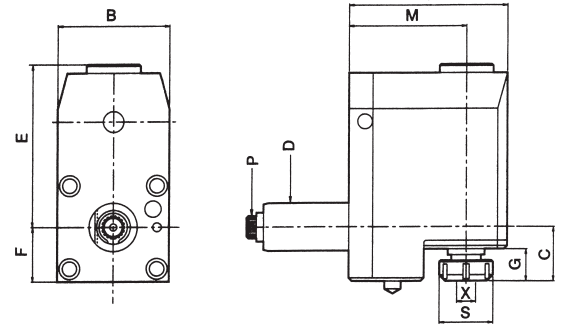
OFFSET RADIAL DRILLING AND MILLING HEAD WITH DIN 5480 DRIVE COUPLING

- Uses ER collets
- External coolant supply
- Collet is not included

MODE: BL
LEFT-HAND



MODE: BR
RIGHT HAND



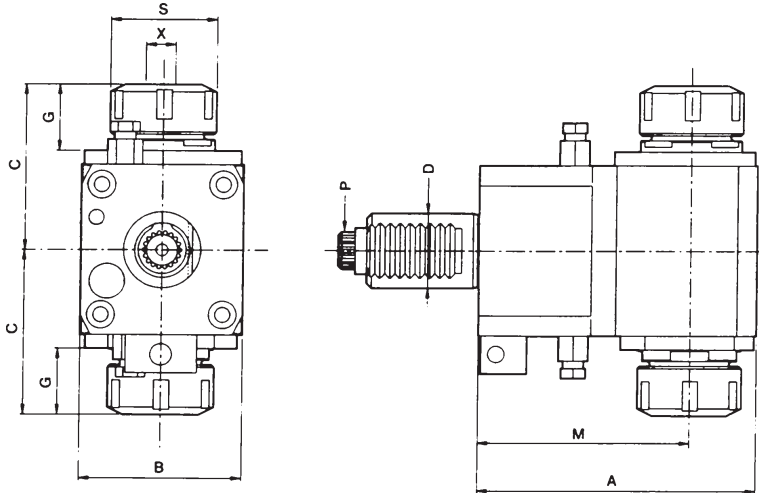
EA PART NUMBER	D DIN 69880	X CAPACITY		S	MAX RPM	i	A	B	C	E	F	G	M	P DIN 5480
VDI BR30-5480-2569	30	1-16	ER25	42	5000	1:1	95	60	42	75.5	31.5	28.5	69	W16X0.8
VDI BL30-5480-2569														
VDI BR40-5480-3290	40	2-20	ER32	50	5000	1:1	124	80	44	110	42	34	90	W20X0.8
VDI BL40-5480-3290														

OFFSET RADIAL TENSION COMPRESSION TAPPING HEADS ALSO AVAILABLE.



DOUBLE COLLET RADIAL DRILLING AND MILLING HEAD WITH DIN 5480 DRIVE COUPLING

- Uses ER collets
- External coolant supply
- Collet is not included

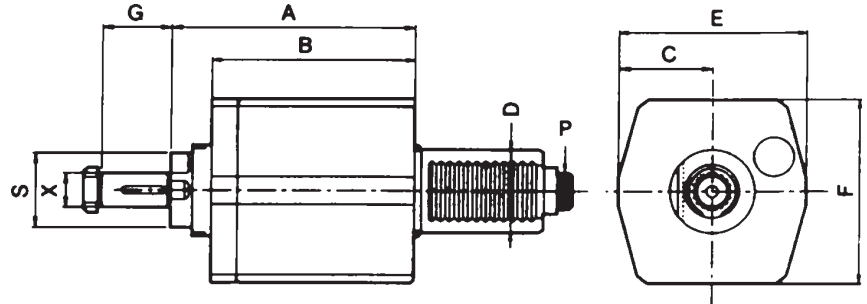


EA PART NUMBER	D DIN 69880	X CAPACITY	S	MAX RPM	i	A	B	C	G	M	P DIN 5480	
VDI DF30-5480-2585D	30	1-16	ER25	42	4000	1:1	112	64	66	26.5	85	W16X0.8
VDI DF40-5480-3285D	40	2-20	ER32	42	4000	1:1	119	80	82	28	85	W20X0.8
VDI DF40-5480-32100D	40	2-20	ER32	50	4000	1:1	134	80	82	28	100	W20X0.8

NOTE: ON ONE SIDE OF TOOL OUTPUT ROTATION IS THE SAME AS INPUT ROTATION, BUT ON THE OTHER SIDE, OUTPUT ROTATION IS OPPOSITE OF INPUT ROTATION.

AXIAL MILLING HEAD WITH DIN 5480 COUPLING

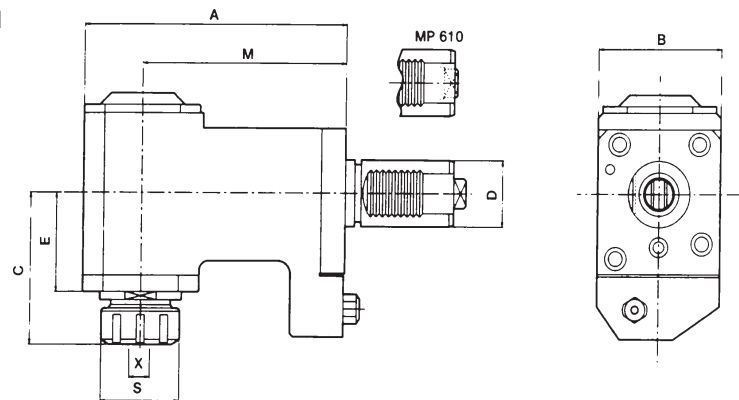
- Uses ER collets
- External coolant supply
- Collet is not included



EA PART NUMBER	D DIN 69880	X DIN 6358	S	MAX RPM	i	A	B	C	E	F	G	P DIN 5480
VDI DA30-5480-16C	30	16	32	3000	1:1	91.5	70	33	66	66	27	W16X0.8
VDI DA40-5480-16C	40	16	32	3000	1:1	68.5	55	39	79	78	27	W20X0.8
VDI DA40-5480-22C	40	22	32	3000	1:1	68.5	55	39	79	78	31	W20X0.8

H TYPE MILLING AND DRILLING HEAD FOR MAZAK MULTIPLEX

- Uses ER collets
- External coolant supply
- Collet is not included



EA PART NUMBER	MACHINE TYPE	MODELS	D	X CAPACITY	S	MAX RPM	A	B	C	E	M	
VDI 5346800	MP410N-12D 415N-12D MP620-12D 6200-16D	MP 610	40	1-16	ER25	42	5000	152	75	90	60	115
VDI 5347600	MP420N-12D 620N-12D	MP 620	40	1-16	ER25	42	5000	167	80	90	60	130
VDI 5347632	MP620-12D 6200-16D		40	2-20	ER32	50	5000	167	80	92	60	130

NOTE: OUTPUT ROTATION IS OPPOSITE INPUT ROTATION.
 H TYPE TENSION COMPRESSION TAPPING HEADS ALSO AVAILABLE.