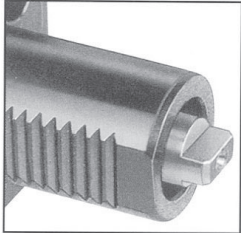


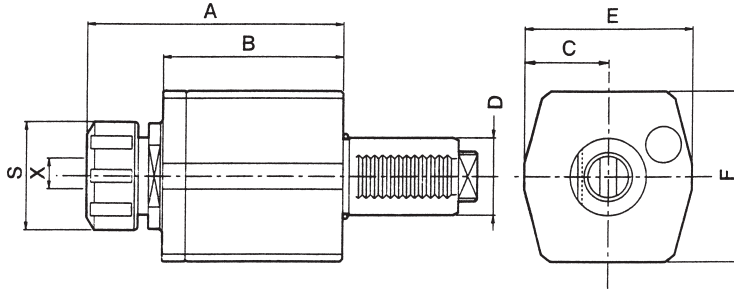


AXIAL DRILLING AND MILLING HEAD WITH DIN 1809 DRIVE COUPLING

- Uses ER collets
- External coolant supply
- Collet is not included



COUPLING TO DIN 1809

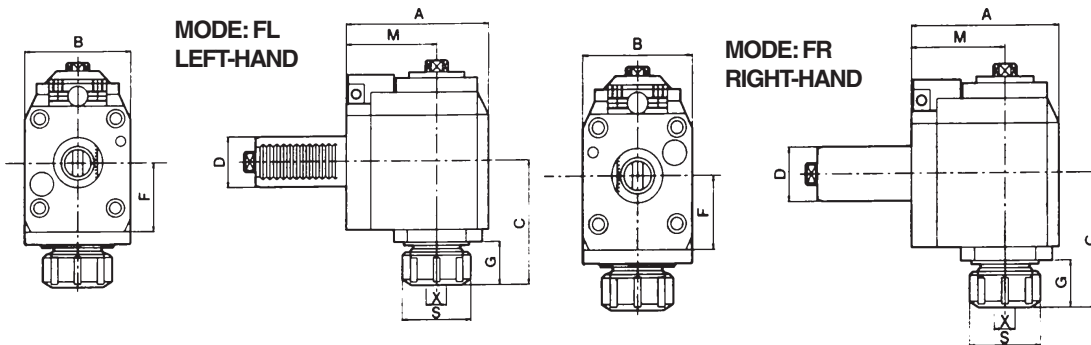


EA PART NUMBER	D DIN 69880	X CAPACITY		S	MAX. RPM	i	A	B	C	E	F
VDI DA20-1809-ER16	20	1-10	ER16	32	6000	1:1	76	48	25	50	50
VDI DA30-1809-ER25	30	1-16	ER25	42	6000	1:1	101	70	33	66	66
VDI DA40-1809-ER32	40	2-20	ER32	50	6000	1:1	89	55	39	79	78
VDI DA50-1809-ER40	50	3-26	ER40	62	6000	1:1	128	85	40	84	88
VDI DA60-1809-ER50	60	10-34	ER50	78	6000	1:1	154	98	52	104	104

AXIAL TENSION COMPRESSION TAPPING HEADS ALSO AVAILABLE.

RADIAL DRILLING AND MILLING HEAD WITH DIN 1809 DRIVE COUPLING

- Uses ER collets
- External coolant supply
- Collet is not included

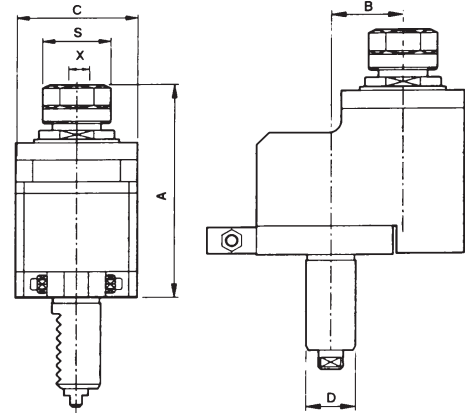


EA PART NUMBER	D DIN 69880	X CAPACITY		S	MAX RPM	i	A	B	C	F	G	M
VDI FR30-1809-2555	30	1-16	ER25	42	5000	1:1	87	64	74.5	41	26	55
VDI FL30-1809-2555												
VDI FR40-1809-3265	40	2-20	ER32	50	5000	1:1	99	80	71	40	23	65
VDI FL40-1809-3265												
VDI FR50-1809-4075	50	3-26	ER40	63	5000	1:1	115	88	103	56	40	75
VDI FL50-1809-4075												

NOTE: OUTPUT ROTATION IS OPPOSITE INPUT ROTATION.
RADIAL TENSION COMPRESSION TAPPING HEADS ALSO AVAILABLE.

OFFSET AXIAL DRILLING AND MILLING HEAD WITH DIN 1809 DRIVE COUPLING

- Uses ER collets
- External coolant supply
- Collet is not included

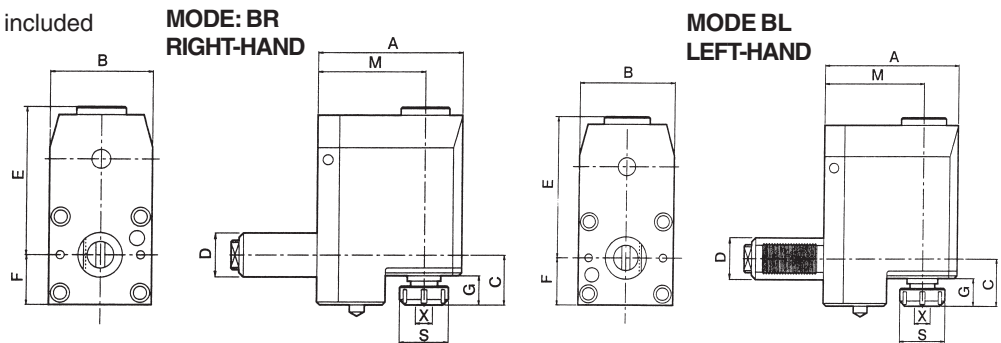


EA PART NUMBER	D DIN 69880	X CAPACITY		S	MAX RPM	i	A	B	C
VDI DA20-1809-1629	20	1-10	ER16	32	4000	1:1	93.5	29	50
VDI DA30-1809-2529	30	1-16	ER25	42	4000	1:1	100	29	60
VDI DA30-1809-2529/1	30	1-16	ER25	42	8000	1:2	100	29	60
VDI DA40-1809-3250	40	2-20	ER32	50	4000	1:1	113	50	80
VDI DA50-1809-4065	50	3-26	ER40	63	3000	1:1	124	65	80

NOTE: OUTPUT ROTATION IS OPPOSITE INPUT ROTATION.

OFFSET RADIAL DRILLING AND MILLING HEAD WITH DIN 1809 DRIVE COUPLING

- Uses ER collets
- External coolant supply
- Collet is not included



EA PART NUMBER	D DIN 69880	X CAPACITY		S	MAX. RPM	i	A	B	C	E	F	G	M
VDI BR20-1809-1657	20	1-10	ER16	32	5000	1:1	80	50	43	62.5	27	28.5	57
VDI BL20-1809-1657													
VDI BR30-1809-2569	30	1-16	ER25	42	5000	1:1	95	60	41.5	75.5	31.5	29	69
VDI BL30-1809-2569													
VDI BR40-1809-3290	40	2-20	ER32	50	5000	1:1	124	80	44	110	42	34	90
VDI BL40-1809-3290													
VDI BR50-1809-4090	50	3-26	ER40	62	5000	1:1	129	86	49	112	45	39	90
VDI BL50-1809-4090													
VDI BR60-1809-50102	60	10-34	ER50	78	5000	1:1	147	104	83	118	54	42	102
VDI BL60-1809-50102													

OFFSET RADIAL TENSION COMPRESSION MILLING HEAD ALSO AVAILABLE.