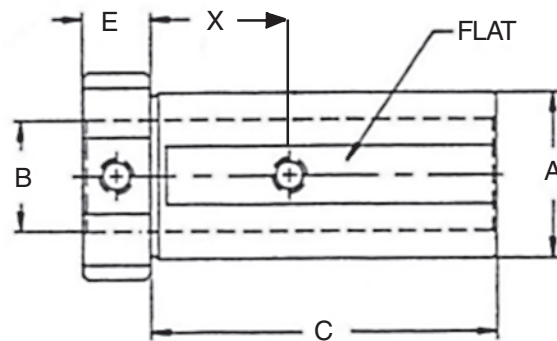


TOOL HOLDER BUSHINGS

STYLE "LBF"

EDWARD ANDREWS "LBF" Style Tool Holder Bushings are manufactured with two set screws, a flat for clamping, and clearance notches for coolant. These bushings are designed to fit in the tool blocks of many popular Okuma lathe models.

MADE IN THE U.S.A. OF THRU HARDENED ALLOY AND PRECISION GROUND.



INCH OD

EA PART NUMBER	BUSHING DIA.	STANDARD BORE SIZES STOCKED*	LENGTH UNDER HEAD	HEAD THICKNESS	LENGTH DIMS.
	A	B	C	E	X
EA68-03LBF	1-1/2	1/4, 3/8, 1/2, 5/8, 3/4, 1	3-1/8	5/8	1-1/4

METRIC OD

EA68-83LBF	40MM	1/4, 3/8, 1/2, 5/8, 3/4, 1	3-1/8	5/8	1-1/4
------------	------	----------------------------	-------	-----	-------

* Special Sizes Available.

WHEN ORDERING BUSHINGS, SPECIFY EA PART NUMBER AND BORE SIZE REQUIRED.