



EDWARD ANDREWS INTERNATIONAL

"Tooling and Workholding Specialist in the Metal Cutting Industry"

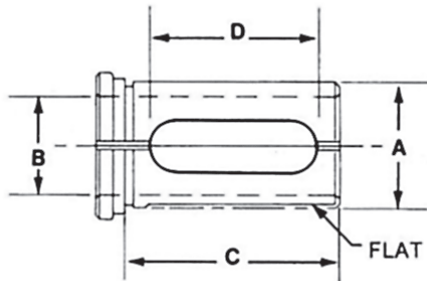
STERLING HEIGHTS, MICHIGAN

TOOL HOLDER BUSHINGS

STYLE "CX"

EDWARD ANDREWS multi-use "CX" Bushing is a **patented** adaptor bushing with an elongated slot for gripping through the bushing directly on the flat of shank type tools or boring bars. The bushing also has a flat and is split for holding shanks or boring bars without flats. It is also preferred for holding certain *solid carbide shank boring bars*.

This premium adaptor bushing is available in a full complement of sizes including AMERICAN STD. (INCH) SIZES, WORLD STD. (METRIC) SIZES and a complete range of INCH/METRIC COMBINATIONS. For example: American Std. (Inch) tooling can be utilized in Metric Std. machine tools giving the user the opportunity to utilize existing inventories of inch (Amer. Std.) tooling on the new metric (World Std.) machines. They also feature our stepped head design for easy removal.



MADE IN THE U.S.A. OF THRU HARDENED ALLOY AND PRECISION GROUND.

INCH OD - INCH ID

EA PART NUMBER	BUSHING DIA.	STANDARD BORE SIZES STOCKED*	LENGTH UNDERHEAD	LENGTH OF SLOT
	A	B	C	D
EA68-11CX	1	1/4, 5/16, 3/8, 1/2, 5/8, 3/4	2-3/4	2-3/8
EA68-12CX	1-1/4	3/8, 1/2, 5/8, 3/4, 1	3-1/4	2-3/4
EA68-13CX	1-1/2	3/8, 1/2, 5/8, 3/4, 7/8, 1, 1-1/4	3-3/8	3
EA68-14CX	1-3/4	3/8, 1/2, 5/8, 3/4, 7/8, 1, 1-1/4, 1-1/2	3-1/2	3-1/8
EA68-15CX	2	1/2, 5/8, 3/4, 7/8, 1, 1-1/4, 1-1/2, 1-3/4	4	3-5/8
EA68-16CX	2-1/2	1/2, 5/8, 3/4, 7/8, 1, 1-1/4, 1-1/2, 1-3/4, 2, 2-1/4	4-1/2	4
EA68-17CX	3	1, 1-1/4, 1-1/2, 1-3/4, 2, 2-1/4, 2-1/2	5	4-1/2
EA68-18CX	3-1/2	1-1/2, 1-3/4, 2, 2-1/4, 2-1/2, 3	5-3/4	5

* Special Sizes Available.

CALL TO CHECK AVAILABILITY ON SPECIAL SIZES. MANY TIMES SPECIAL SIZES ARE IN STOCK.

WHEN ORDERING BUSHINGS, SPECIFY EA PART NUMBER AND BORE SIZE REQUIRED.



TOOL HOLDER BUSHINGS

* Special Sizes Available.

STYLE "CX"

INCH OD - METRIC ID

EA PART NUMBER	BUSHING DIA.	STANDARD BORE SIZES STOCKED*	LENGTH UNDERHEAD	LENGTH OF SLOT
	A		C	D
EA68-70CX	3/4 IN.	6 - 8 - 10 - 12 MM	2-1/4	1-7/8
EA68-71CX	1 IN.	10 - 12 - 16 - 20 MM	2-3/4	2-3/8
EA68-72CX	1-1/4 IN.	10 - 12 - 16 - 20 - 25 MM	3-1/4	2-3/4
EA68-73CX	1-1/2 IN.	10 - 12 - 16 - 20 - 25 - 32 MM	3-3/8	3
EA68-74CX	1-3/4 IN.	12 - 16 - 20 - 25 - 32 - 40 MM	3-1/2	3-1/8
EA68-75CX	2 IN.	12 - 16 - 20 - 25 - 32 - 40 - 45 MM	4	3-5/8
EA68-76CX	2-1/2 IN.	20 - 25 - 32 - 40 - 45 - 50 MM	4-1/2	4
EA68-77CX	3 IN.	25 - 32 - 40 - 50 - 60 - 63 MM	4-1/2	4
EA68-78CX	3-1/2 IN.	40 - 50 - 60 - 63 MM	5-3/4	5

METRIC OD - INCH ID

EA PART NUMBER	BUSHING DIA.	STANDARD BORE SIZES STOCKED*	LENGTH UNDERHEAD	LENGTH OF SLOT
	A		C	D
EA68-80CX	20 MM	1/4, 5/16, 3/8, 1/2 IN	2-1/4	1-7/8
EA68-81CX	25 MM	3/8, 1/2, 5/8, 3/4 IN	2-3/4	2-3/8
EA68-82CX	32 MM	3/8, 1/2, 5/8, 3/4, 7/8, 1 IN.	3-1/4	2-3/4
EA68-83CX	40 MM	3/8, 1/2, 5/8, 3/4, 1, 1-1/4 IN.	3-3/8	3
EA68-84CX	45 MM	1/2, 5/8, 3/4, 1, 1-1/4, 1-1/2 IN.	3-1/2	3-1/8
EA68-85CX	50 MM	1/2, 5/8, 3/4, 1, 1-1/4, 1-1/2, 1-3/4 IN.	4	3-5/8
EA68-86CX	60MM	3/4, 1, 1-1/4, 1-1/2, 1-3/4, 2 IN.	4-1/2	4
EA68-863CX	63 MM	3/4, 1, 1-1/4, 1-1/2, 1-3/4, 2 IN.	4-1/2	4
EA68-865CX	65MM	3/4, 1, 1-1/4, 1-1/2, 1-3/4, 2 IN.	4-1/2	4

METRIC OD - METRIC ID

EA PART NUMBER	BUSHING DIA.	STANDARD BORE SIZES STOCKED*	LENGTH UNDERHEAD	LENGTH OF SLOT
	A		C	D
EA68-90CX	20 MM	6 - 8 - 10 - 12 MM	2-1/4	1-7/8
EA68-91CX	25 MM	10 - 12 - 16 - 20 MM	2-3/4	2-3/8
EA68-92CX	32 MM	10 - 12 - 16 - 20 - 25 MM	3-1/4	2-3/4
EA68-93CX	40 MM	10 - 12 - 16 - 20 - 25 - 32 MM	3-3/8	3
EA68-94CX	45 MM	10 - 12 - 16 - 20 - 25 - 32 MM	3-1/2	3-1/8
EA68-95CX	50 MM	12 - 16 - 20 - 25 - 32 - 40 MM	4	3-5/8
EA68-96CX	60MM	20 - 25 - 32 - 40 - 45 - 50 MM	4-1/2	4
EA68-963CX	63 MM	20 - 25 - 32 - 40 - 50 MM	4-1/2	4
EA68-965CX	65MM	20 - 25 - 32 - 40 - 50 MM	4-1/2	4

WHEN ORDERING BUSHINGS, SPECIFY EA PART NUMBER AND BORE SIZE REQUIRED.