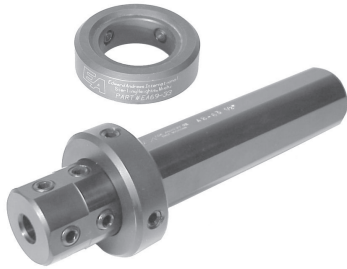




EDWARD ANDREWS INTERNATIONAL

"Tooling and Workholding Specialist in the Metal Cutting Industry"

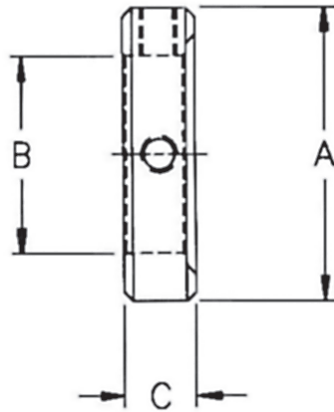
STERLING HEIGHTS, MICHIGAN



TOOL SET™ COLLARS

TOOL SET COLLARS™ are used on any shank, boring bar, or sleeve. They are secured at a determined point on the tool and left in place as an integral part of the set-up in any preset type tooling application.

MADE IN THE U.S.A. OF THRU HARDENED ALLOY AND PRECISION GROUND.



EA PART NUMBER	OUTSIDE DIA.	STANDARD BORE SIZES STOCKED*	THICKNESS	METRIC	
	A			B	EA PART NUMBER
EA69-30	2	3/4	3/4	----	----
EA69-31	2	1	3/4	EA69-91MM	25MM
EA69-32	2-1/4	1-1/4	3/4	EA69-92MM	32MM
EA69-33	2-1/2	1-1/2	3/4	EA69-93MM	40MM
EA69-34	2-3/4	1-3/4	3/4	EA69-94MM	45MM
EA69-35	3	2	3/4	EA69-95MM	50MM
EA69-36	3-1/2	2-1/2	3/4	EA69-96MM	60MM
EA69-37	4-1/2	3	1	EA69-97MM	80MM
EA69-38	5	3-1/2	1	----	----
EA69-39	5-1/2	4	1	----	----