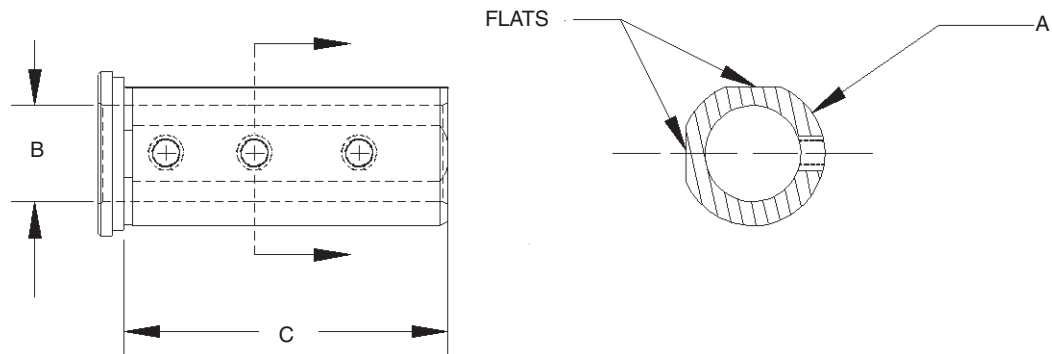
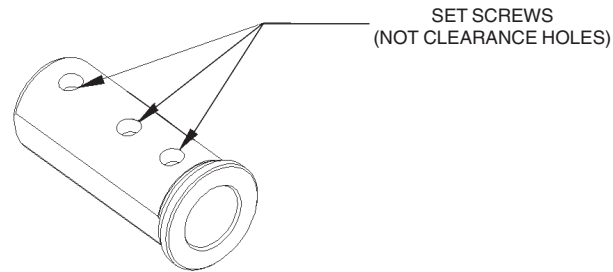


TOOL HOLDER BUSHINGS

STYLE "CA"

EDWARD ANDREWS "CA" Style Tool Holder Bushings are designed for universal use in turning applications to adapt drills, boring bars and shank tools of various diameters to the standard bore of the tool holders on the machine. The set screws in the main body of the bushing allow for pre-setting the tool.

MADE IN THE U.S.A. OF THRU HARDENED ALLOY AND PRECISION GROUND.



EA PART NUMBER	BUSHING DIA.	STANDARD BORE SIZES STOCKED*	LENGTH UNDER HEAD
	A	B	C
EA68-12CA	1-1/4	3/8, 1/2, 5/8, 3/4	3-1/4
EA68-13CA	1-1/2	3/8, 1/2, 5/8, 3/4, 1	3-3/8
EA68-15CA	2	1/2, 5/8, 3/4, 1, 1-1/4	4

* Special Sizes Available.

WHEN ORDERING BUSHINGS, SPECIFY EA PART NUMBER AND BORE SIZE REQUIRED.