



# EDWARD ANDREWS INTERNATIONAL

"Tooling and Workholding Specialist in the Metal Cutting Industry"

STERLING HEIGHTS, MICHIGAN

## TOOL HOLDER BUSHINGS

### STYLE "C"

EDWARD ANDREWS Style "C" Bushings are designed for universal use on all CNC TURNING MACHINES to adapt drills, boring bars and shank tools with flats of various diameters to the standard bore of the tool holders on the machine.

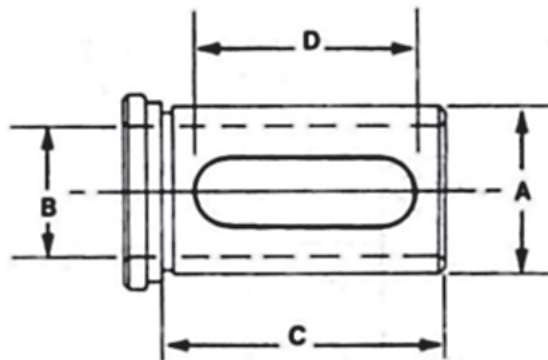
These premium Style "C" Bushings are solid with set screw clearance slots instead of holes which gives the user complete interchangeability with all brands of equipment, eliminating the need to stock separate "OEM" bushings for every different brand of equipment. They also feature our stepped head design for easy removal.

**MADE IN THE U.S.A. OF THRU HARDENED ALLOY AND PRECISION GROUND.**

ELONGATED SLOT  
ALLOWS FOR "UNIVERSAL"  
USE ON ALL BRANDS  
OF EQUIPMENT



BUSHINGS HAVE 1 SLOT EXCEPT  
BUSHINGS 2 1/2" O.D. AND LARGER WITH  
AT LEAST 1 1/4" I.D.  
HAVE 2 SLOTS.



### INCH OD - INCH ID

EA PART NUMBER	BUSHING DIA.	STANDARD BORE SIZES STOCKED*	LENGTH UNDER HEAD	LENGTH OF SLOT
	A	B	C	D
EA68-10C	3/4	1/4, 5/16, 3/8, 1/2	2-1/4	1-7/8
EA68-11C	1	1/4, 5/16, 3/8, 1/2, 5/8, 3/4	2-3/4	2-3/8
EA68-12C	1-1/4	3/8, 1/2, 5/8, 3/4, 7/8, 1	3-1/4	2-3/4
EA68-13C	1-1/2	3/8, 1/2, 5/8, 3/4, 7/8, 1, 1-1/4	3-3/8	3
EA68-14C	1-3/4	3/8, 1/2, 5/8, 7/8, 1, 1-1/4, 1-1/2	3-1/2	3-1/8
EA68-15C	2	1/2, 5/8, 3/4, 7/8, 1, 1-1/4, 1-1/2, 1-3/4	4	3-5/8
EA68-16C	2-1/2	1/2, 5/8, 3/4, 7/8, 1, 1-1/4, 1-1/2, 1-3/4, 2, 2-1/4	4-1/2	4
EA68-17C	3	1, 1-1/4, 1-1/2, 1-3/4, 2, 2-1/4, 2-1/2	5	4-1/2
EA68-18C	3-1/2	1-1/2, 1-3/4, 2, 2-1/4, 2-1/2, 3	5-3/4	5

\* Special Sizes Available

**CALL TO CHECK AVAILABILITY ON SPECIAL SIZES.  
MANY TIMES SPECIAL SIZES ARE IN STOCK.**

WHEN ORDERING BUSHINGS, SPECIFY EA PART NUMBER AND BORE SIZE REQUIRED.

## TOOL HOLDER BUSHINGS

### STYLE "C"

**MADE IN THE U.S.A. OF THRU HARDENED ALLOY  
AND PRECISION GROUND.**

ELONGATED SLOT  
ALLOWS FOR "UNIVERSAL"  
USE ON ALL BRANDS  
OF EQUIPMENT



BUSHINGS HAVE 1 SLOT EXCEPT  
BUSHINGS 2½" O.D. AND LARGER  
WITH AT LEAST 1¼" I.D.  
HAVE 2 SLOTS.

### INCH OD - METRIC ID

EA PART NUMBER	BUSHING DIA.	STANDARD BORE SIZES STOCKED*	LENGTH UNDER HEAD	LENGTH OF SLOT
		B	C	D
EA68-70C	3/4 IN.	6 - 8 - 10 - 12 MM	2-1/4	1-7/8
EA68-71C	1 IN.	10 - 12 - 16 - 20 MM	2-3/4	2-3/8
EA68-72C	1-1/4 IN.	10 - 12 - 16 - 20 - 25 MM	3-1/4	2-3/4
EA68-73C	1-1/2 IN.	10 - 12 - 16 - 20 - 25 - 32 MM	3-3/8	3
EA68-74C	1-3/4 IN.	12 - 16 - 20 - 25 - 32 - 40 MM	3-1/2	3-1/8
EA68-75C	2 IN.	12 - 16 - 20 - 25 - 32 - 40 - 45 MM	4	3-5/8
EA68-76C	2-1/2 IN.	20 - 25 - 32 - 40 - 45 - 50 MM	4-1/2	4
EA68-77C	3 IN.	25 - 32 - 40 - 50 - 60 - 63 MM	5	4-1/2
EA68-78C	3-1/2 IN.	40 - 50 - 60 - 63 MM	5-3/4	5

\* Special Sizes Available

### METRIC OD - INCH ID

EA PART NUMBER	BUSHING DIA.	STANDARD BORE SIZES STOCKED*	LENGTH UNDER HEAD	LENGTH OF SLOT
		B	C	D
EA68-80C	20 MM	1/4, 5/16, 3/8, 1/2 IN.	2-1/4	1-7/8
EA68-81C	25 MM	3/8, 1/2, 5/8, 3/4 IN.	2-3/4	2-3/8
EA68-82C	32 MM	3/8, 1/2, 5/8, 3/4, 7/8, 1 IN.	3-1/4	2-3/4
EA68-83C	40 MM	3/8, 1/2, 5/8, 3/4, 1, 1-1/4 IN.	3-3/8	3
EA68-84C	45 MM	1/2, 5/8, 3/4, 1, 1-1/4, 1-1/2 IN.	3-1/2	3-1/8
EA68-85C	50 MM	1/2, 5/8, 3/4, 1, 1-1/4, 1-1/2, 1-3/4 IN.	4	3-5/8
EA68-86C	60MM	3/4, 1, 1-1/4, 1-1/2, 1-3/4, 2 IN.	4-1/2	4
EA68-863C	63MM	3/4, 1, 1-1/4, 1-1/2, 1-3/4, 2 IN.	4-1/2	4
EA68-865C	65MM	3/4, 1, 1-1/4, 1-1/2, 1-3/4, 2 IN.	4-1/2	4

\* Special Sizes Available

WHEN ORDERING BUSHINGS, SPECIFY EA PART NUMBER AND BORE SIZE REQUIRED.