



SAMCHULLY
 HARD JAWS

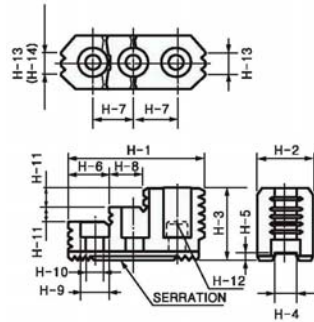
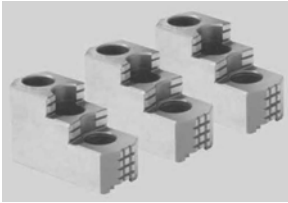


Fig 1

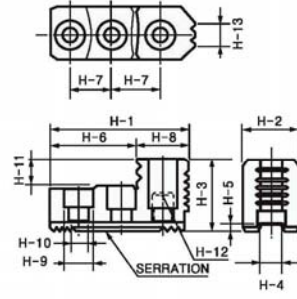


Fig 2

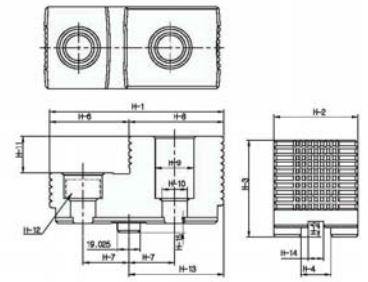


Fig 3

Dimensions

Part Number	Fig.	Serration Pitch	H-1	H-2	H-3	H-4	H-5	H-6	H-7	H-8	H-9	H-10	H-11	H-12	H-13	H-14	H-15	Corresponding Chuck
HB04N1	2	1.5X60°	53	23	27.5	10	4	30.5	14	22.5	13.5	8.5	10	M8	6	---	---	HS-04, HS-05
HB06A1	1	1.5X60°	67	31	41	12	5	18	20	17	17	11	9	M10	10	10	---	HC-06, HCH-06, HS-06
HB08A1	1	1.5X60°	86	35	51	14	5	31	25	18	19	13	12	M12	12	12	---	HC-08, HCH-08, HS-08
HB10A1	1	1.5X60°	99.5	40	54	16	5	43	30	17	19	13	13	M12	15	15	---	HC-10, HCH-10, HS-10
HB12B1	2	1.5X60°	97.5	50	55	18	5	64.5	30	33	22	15	20	M14	18	---	---	HC-12, HCH-12
HB12N1	2	1.5X60°	103	50	52	21	4	62.5	30	40.5	25	17	17	M16	30	---	---	HS-12
HB15A1	1	1.5X60°	149	62	86	22	9	63	43	34	32	21	20	M20	40	40	---	HCH-15, HCH-18
HB15A2	1	3.0X60°	149	62	86	22	9	63	50	34	32	21	20	M20	40	40	---	HCH-18B
HB15N1	1	1.5X60°	149	62	86	25.5	5	69	43	27	32	21	20	M20	43	38	---	HC-15, HC-18
HB18B2	2	3.0X60°	159.5	80	90	25	9	104.5	50	55	32	21	40	M20	55	---	---	HC-21, HC-24, HCH21, HCH-24
HB32B2	2	3.0X60°	145	70	75	25.5	7	66	76.2	79	32	21	32	M20	---	---	---	HCH-32 (Serration)
HB32GB	3	---	145	70	83	25	13	66	38.1	79	32	21	32	M20	79	12.7	8	HC-32 (Groove)
HB32SB2	2	3.0X60°	168	70	75	25.5	7.5	89	38.1	79	32	21	32	M20	---	---	---	HC-32 (Serration)
HB40GB	3	---	223	80	124	30	15	133	38.1	90	39	26	55	M24	83	---	7	HC-40 (Groove)
HB40SB2	2	3.0X60°	223	80	117	30	8	133	114.3	90	39	26	55	M24	---	---	---	HC-40 (Serration)