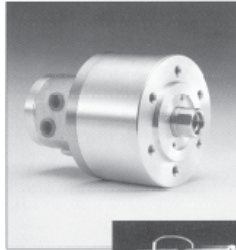
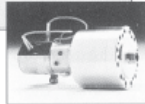




EDWARD ANDREWS INTERNATIONAL
"Tooling and Workholding Specialist in the Metal Cutting Industry"
 STERLING HEIGHTS, MICHIGAN



YR Series



YRE Series

KITAGAWA® YR & YRE SERIES HYDRAULIC CYLINDERS

Closed center hydraulic cylinders feature high-speed and long stroke options for use with all closed center chucks with speeds up to 6,000 RPM.

SPECIAL FEATURES:

- * Safety Check Valves to Ensure Safety in the Event of Hydraulic Failure
- * Safety Pressure Relief Valve to Prevent Damage to Cylinders in the Event of Over Pressure
- * High Speed, Compact and Lightweight
- * Maintenance Free Design

SPECIAL FEATURES:

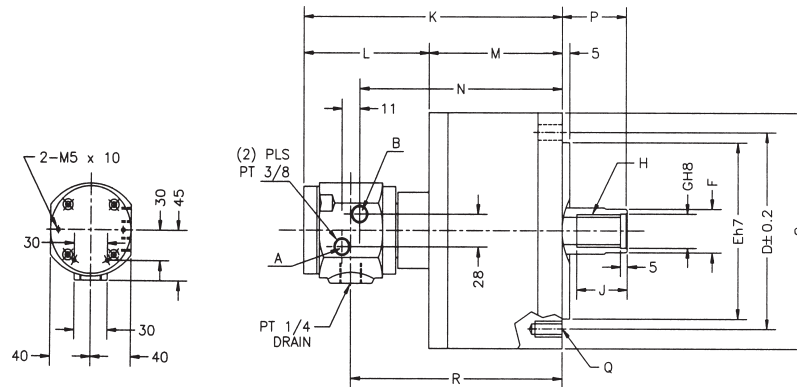
- * Safety Check Valves to Ensure Safety in the Event of Hydraulic Failure
- * Safety Pressure Relief Valve to Prevent Damage to Cylinders in the Event of Over Pressure
- * High Speed, Compact and Lightweight
- * Maintenance Free Design

MODEL	UNIT	Y0715R(E)	Y1020R(E)	Y1225R(E)	Y1530R(E)	Y2035R(E)
PISTON STROKE	IN.	0.590	0.787	0.984	1.181	1.378
PISTON AREA-PULL SIDE	IN.2	5.7	12.3	17.5	24.8	45.0
PISTON AREA-PUSH SIDE	IN.2	6.8(6.5)	13.3(13.0)	18.9(18.6)	27.3(27.0)	48.7(48.4)
MAX. DRAW BAR PULL FORCE	LBS.	3,118	6,505	9,423	13,460	24,229
MAX. OPERATION PRESSURE	PSI	570	570	570	570	570
OIL LEAKAGE RATE*	GAL/MIN	0.2	0.2	0.2	0.2	0.2
MAX SPEED	RPM	6,000	6,000	6,000	5,500	5,500
NET WEIGHT	LBS	9(10)	16(17)	22(23)	30(31)	49(50)

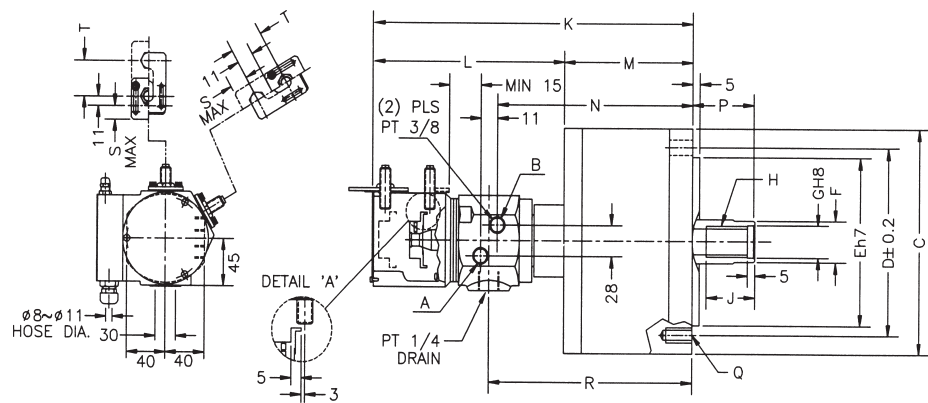
(E) Designated stroke detection option using detector plates and proximity switches.

* Oil leakage rate is based on operating pressure of 435 psi at oil temperature of 122° F.

YR DIMENSIONAL DRAWING



YRE DIMENSIONAL DRAWING



MODEL	Y0715R(E)	Y1020R(E)	Y1225R(E)	Y1530R(E)	Y2035R(E)
A (PISTON DIA.)	2.953	4.134	4.921	5.906	7.874
B (STROKE)	0.591	0.787	0.984	1.181	1.378
C	4.094	5.315	6.299	7.480	9.646
D	3.543	3.937	5.118	5.118	5.709
E	2.559	3.150	4.331	4.331	4.724
F	1.181	1.181	1.378	1.772	2.165
G	0.827	0.827	0.984	1.220	1.457
H	M20	M20	M24	M30	M36
J	1.378	1.378	1.732	1.772	2.362
K	6.772(8.937)	7.756(9.921)	8.071(10.236)	8.425(10.591)	8.976(11.339)
L	4.173(6.339)	4.252(6.417)	4.252(6.417)	4.252(6.417)	4.173(6.535)
M	2.598	3.504	3.819	4.173	4.803
N	5.000	5.984	6.299	6.654	7.205
P MAX.	1.811	1.772	2.008	2.205	2.217
P MIN.	1.220	0.984	1.024	1.024	1.339
Q	6-M6X20	6-M10X20	6-M12X24	12-M12X24	12-M16X30
R	5.236	6.220	6.535	6.890	7.441
S	(0.906)	(0.906)	(0.906)	(0.906)	(1.102)
T	(1.614)	(1.614)	(1.614)	(1.614)	(1.811)