

KITAGAWA[®] POWER CHUCKS

B & BT SERIES

Three-jaw (B Series) and two-jaw (BT Series) wedge style power chucks are ideal for high speed chucking, bar chucking and universal machining. These deliver constant accuracy and repetitive chucking.

Special Features:

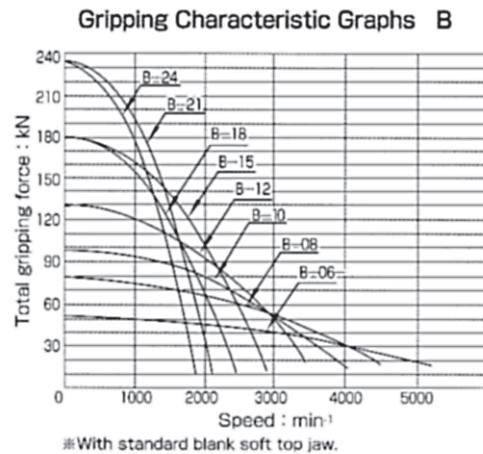
- * Large Thru-Hole
- * Compact and Lightweight
- * Strong Clamping Force
- * Direct Mount
- * High Speed
- * High Accuracy and High Endurance

SPECIFICATIONS

MODEL	UNIT	B-15A08	B-15A11	B-18A08	B-18A11	B-21A11	B-21A15	B-24A11	B-24A15
SPINDLE NOSE	----	A2-8	A2-11	A2-8	A2-11	A2-11	A2-15	A2-11	A2-15
THRU HOLE	IN.	4.626	4.626	4.626	4.626	5.512	5.512	6.496	6.496
JAW STROKE (DIAMETER)	IN.	0.417	0.417	0.417	0.417	0.417	0.417	0.417	0.417
PLUNGER STROKE	IN.	0.906	0.906	0.906	0.906	0.906	0.906	0.906	0.906
MAX DRAW BAR PULL FORCE	LBS.	15,639	15,639	15,639	15,639	19,824	19,824	19,824	19,824
MAX GRIPPING FORCE	LBS	39,648	39,648	39,648	39,648	51,542	51,542	51,542	51,542
MAX SPEED	RPM	2,500	2,500	2,000	2,000	1,700	1,700	1,400	1,400
NET WEIGHT	LBS	245.8	230.6	405.0	380.0	540.7	528.6	638.8	627.8
GD2	LBS FT2	216.9	208.6	471.8	452.8	908.1	877.2	1,628.8	1,598.0
MATCHING CYLINDER	----	F2511H	F2511H	F2511H	F2511H	F2511H	F2511H	F2511H	F2511H

Note: Specifications are subject to change without notice due to ongoing research and development.

MODEL	UNIT	BT15A08	BT15A11
SPINDLE NOSE	----	A2-8	A2-11
THRU HOLE	IN.	4.626	4.626
JAW STROKE (DIAMETER)	IN.	0.417	0.417
PLUNGER STROKE	IN.	0.906	0.906
MAX DRAW BAR PULL FORCE	LBS.	10,352	10,352
MAX GRIPPING FORCE	LBS	26,432	26,432
MAX SPEED	RPM	2,500	2,500
NET WEIGHT	LBS	234.8	219.6
GD2	LBS FT2	199.4	191.1
MATCHING CYLINDER	----	F2511H	F2511H



Model B and BT Series Chucks are manufactured from high grade alloy steel. All sliding surfaces are hardened and ground to assure consistent accuracy and performance.

Lubrication nipple in each base jaw.

Master Jaw Serration:

Chuck Size 15" to 18" 1.5mm x 60 degree
 Chuck Size 21" & 24" 3mm x 60 degree

Mounting:

Direct mounting to fit ASA B5.9 type A
 (interchangeable with DIN 55026).

Standard Equipment:

Chuck assembled with adapter, chuck mounting bolts, soft top jaws, T-nuts, and jaw mounting bolts with wrench, draw nut wrench.

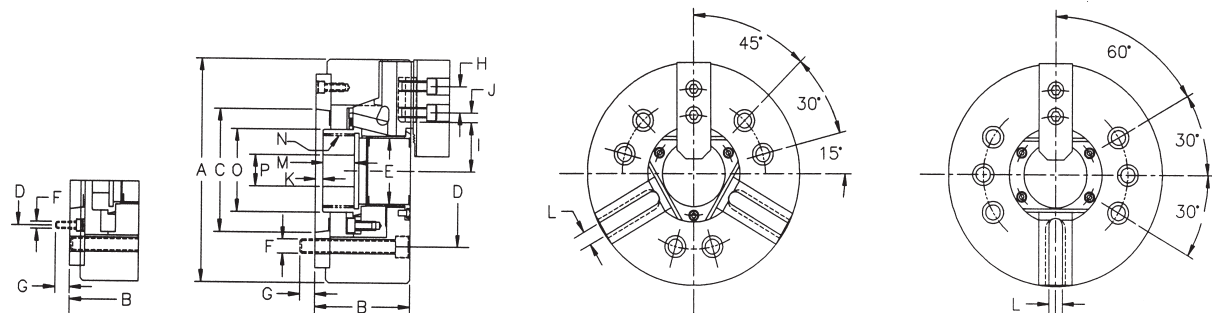


Fig. 1

MODEL	B-15A08 BT15A08	B-15A11 BT15A11	B-18A08	B-18A11	B-21A11	B-21A15	B-24A11	B-24A15
A	15.000	15.000	17.717	17.717	20.866	20.866	24.016	24.016
B	6.299	5.866	6.299	5.866	6.890	6.339	7.244	6.693
C	5.501	7.751	5.501	7.751	7.751	11.250	7.751	11.250
D	6.750	9.252	6.750	9.252	9.252	13.000	9.252	13.000
E	4.626	4.626	4.626	4.626	5.512	5.512	6.496	6.496
F	6xM16	6xM20	6xM16	6xM20	6xM20	6xM22	6xM20	6xM22
G	0.945	1.102	0.945	1.102	1.181	1.339	1.181	1.378
H	1.693	1.693	1.693	1.693	2.362	2.362	2.362	2.362
I max.	3.228	3.228	3.228	3.228	3.878	3.878	4.252	4.252
I min.	3.020	3.020	3.020	3.020	3.669	3.669	4.043	4.043
J max.	1.724	1.724	3.083	3.083	3.448	3.448	4.630	4.630
J min.	0.719	0.719	0.719	0.719	0.847	0.847	0.847	0.847
K max.	1.732	1.299	1.732	1.299	2.047	1.496	2.402	1.850
K min.	0.827	0.394	0.827	0.394	1.142	0.591	1.496	0.945
L	0.866	0.866	0.866	0.866	0.984	0.984	0.984	0.984
M	1.299	1.299	1.299	1.299	1.299	1.299	1.378	1.378
N max.	M130x2.0	M130x2.0	M130x2.0	M130x2.0	M155x3.0	M155x3.0	M175x3.0	M175x3.0
O	5.472	5.472	5.472	5.472	6.693	6.693	7.362	7.362
P	2.362	2.362	2.362	2.362	3.150	3.150	3.150	3.150

B-15A08, B-18A08, B-21A11 and B-24A11 are referred to in Fig 1.
 Draw nut is supplied without thread.